



FOR YOUTH DEVELOPMENT®
FOR HEALTHY LIVING
FOR SOCIAL RESPONSIBILITY

SOCIAL DETERMINANTS OF HEALTH

CONNECTING TO YOUR WORK

May 4, 2023

INTRODUCTION

Jasmine Hardy

Network Facilitator



AGENDA

- 1. FROM HEALTH TO COMMUNITY HEALTH TO SOCIAL DETERMINANTS OF HEALTH**
- 2. CONNECTION TO THE LILLY GRANT**

WHAT IS...

Health

- A state of complete physical, mental, social, emotional and spiritual well-being, not merely the absence of disease or infirmity.

Community Health

- Non-clinical approaches to improving health, preventing disease and reducing health disparities through addressing social, behavioral, environmental, economic and medical determinants of health in a geographically defined population.

TALE OF TWO ZIP CODES

What if we made it so
a zip code
is just that?

WHAT ARE SOCIAL DETERMINANTS OF HEALTH?

Social determinants of health (SDOH) are the conditions in the environments where people are born, live, learn, work, play, worship, and age that affect a wide range of health, functioning, and quality-of-life outcomes and risks. (1,2)

1. (n.d.). *Social Determinants of Health*. Healthy People 2030 - US Department of Health & Human Services. Retrieved April 25, 2023, from <https://health.gov/healthypeople/priority-areas/social-determinants-health>
2. (n.d.). *Social Determinants of Health Training*. UT Health San Antonio Joe R. & Teresa Lozano Long School of Medicine. Retrieved April 25, 2023, from <https://uthscsa.edu/medicine/education/gme/social-determinants-of-health-training>

SOCIAL DETERMINANTS OF HEALTH



For details on the strategies, go to:
HEALTHCAREVALUEHUB.org/social-determinants-of-health

© 2019 Altarum. All rights reserved.

Social Determinants of Health



ECONOMIC STABILITY

- Employment
- Food Insecurity
- Housing Instability
- Poverty



Economic Stability.

EDUCATION ACCESS AND QUALITY

- Early Childhood Development and Education
- Enrollment in Higher Education
- High School Graduation
- Language and Literacy



Education Access and Quality.

HEALTH CARE ACCESS AND QUALITY

- Access to Health Services
- Access to Primary Care
- Health Literacy



Health Care Access and Quality.

NEIGHBORHOOD AND BUILT ENVIRONMENT

- Access to Foods That Support Healthy Dietary Patterns
- Crime and Violence
- Environmental Conditions
- Quality of Housing



Neighborhood and Built Environment

SOCIAL AND COMMUNITY CONTEXT

- Civic Participation
- Discrimination
- Incarceration
- Social Cohesion



Social and Community Context

CONNECTION TO THE LILLY GRANT

LILLY GRANT OVERVIEW

Strengthen Programming for Youth

1. Increase Number of Staff to Support Youth Programs
2. Improve Participation and Engagement of Teens
3. Increase Number of Youth Who Experience Residential Camps

Build Capacity for Indiana YMCAs

4. Improve Data Collection Systems and Capabilities Across Indiana YMCAs
5. Enhance Shared Services Model for Indiana Association
6. Strengthen Financial Stability to Support Youth Programs

GOAL ONE: INCREASE NUMBER OF STAFF TO SUPPORT YOUTH PROGRAMS.

Three-year, capacity building and staff development project with an aim to increase the number of dedicated youth development directors hired by Indiana Ys to work with the four priority youth populations.

SDOH Areas

- Economic Stability:
Employment
- Education Access and Quality:
- Social and Community
Context: Social Cohesion

GOAL TWO: IMPROVE PARTICIPATION AND ENGAGEMENT OF TEENS.

YMCA Workforce Development for Youth

Statewide initiative designed to expand and diversify the Y's talent pipeline by exposing young people to careers with the YMCA. High school students participate in paid career readiness and employability skills training, hands-on work experiences, and professional mentorship.

SDOH Areas

- Economic Stability:
Employment
- Education Access and Quality:
High School Graduation

GOAL TWO: IMPROVE PARTICIPATION AND ENGAGEMENT OF TEENS.

YMCA Youth and Government™

Aims to expand the YMCA Youth and Government™ program

Two components

- Regional recruiters that work serve youth in existing Y community and at least 2 neighboring YMCA communities
- Scholarships for program participants

SDOH Areas

- Social and Community Context: Civic Participation, Social Cohesion

GOAL THREE: INCREASE NUMBER OF YOUTH WHO EXPERIENCE OVERNIGHT CAMPS.

Focus on creating school and community connections that reach more youth and to expand the number and type of camp programs available to youth and their families who would otherwise be unable to attend overnight camp.

SDOH Areas

- Neighborhood and Built Environment: Environmental Conditions
- Social and Community Context: Social Cohesion

STRATEGY TWO: BUILD CAPACITY FOR INDIANA YMCAs

Data Collection Systems: Enhancing of collection tools to collect youth participation in all programming in real time

MSO Shared Services: Centralization of services (accounting and/or payroll) in order to increase resources and/or time for increasing programming capacity and sustainability

Fund Development: Focus on improving ability to raise funds within areas of annual campaign, endowment and capital campaigns

SDOH Areas

- Economic Stability: Employment
- Education Access and Quality: Early Childhood Development & Education, High School Graduation
- Neighborhood and Built Environment: Environmental Conditions
- Social and Community Context: Civic Participation, Social Cohesion

WHERE DO YOU CONNECT??

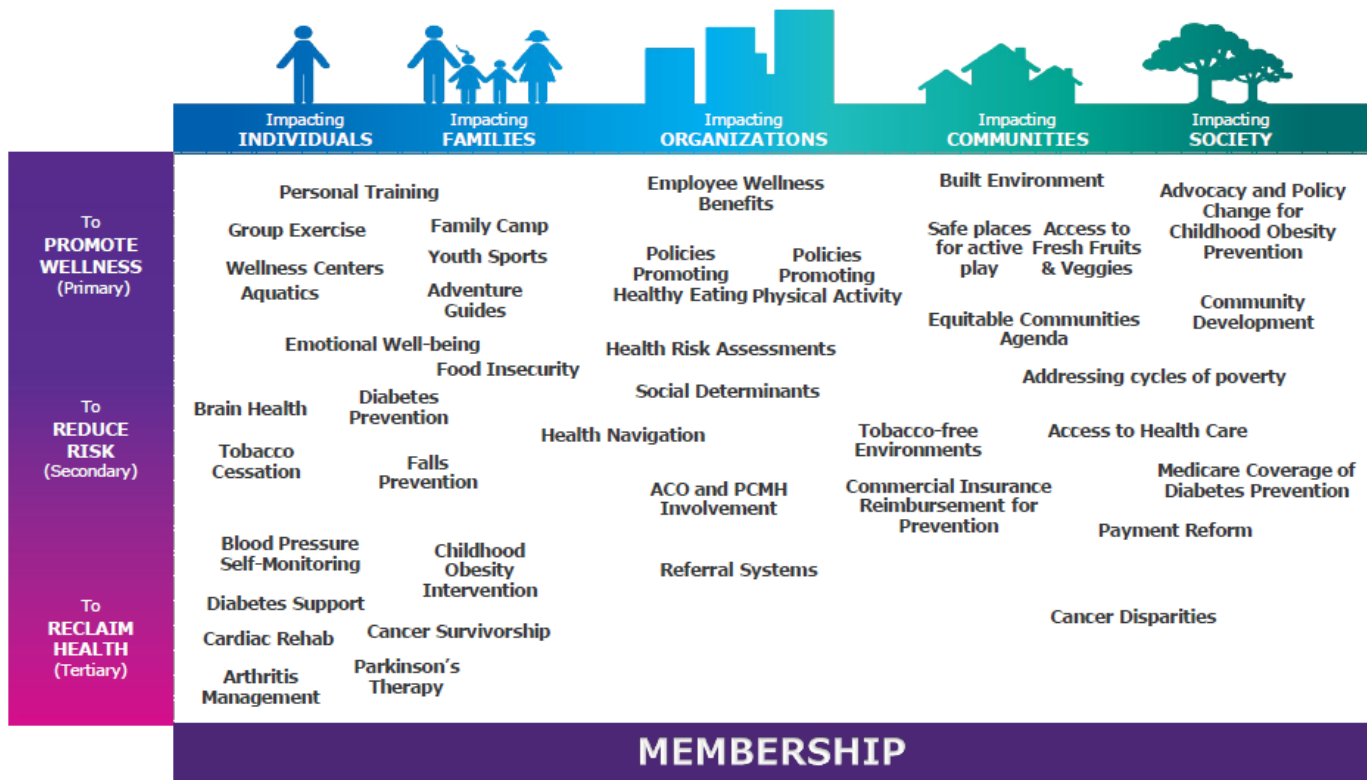
Social Determinants of Health



Social Determinants of Health
Copyright-free

 Healthy People 2030

THE Y'S APPROACH TO COMMUNITY HEALTH



RESOURCES

Health Equity and Social Determinants of Health on Link

<https://link.ymca.net/intranet/pages/1408?lang=ENG>

Healthy People 2030

<https://health.gov/healthypeople/priority-areas/social-determinants-health>

Kaiser Family Foundation

<https://www.kff.org/racial-equity-and-health-policy/issue-brief/beyond-health-care-the-role-of-social-determinants-in-promoting-health-and-health-equity/>

The screenshot shows the LINK intranet interface. The top navigation bar includes the LINK logo, a search bar, and user options like 'Compose' and 'Join/Leave'. The main content area is titled 'Health & Wellness' and features a sub-page for 'Health Equity and Social D...' with a breadcrumb trail: Home > Health Equity and Social D... > Programs & Services > Partnerships & Collaborations > Healthy Aging. A central graphic shows a tree with people icons as branches, accompanied by text explaining the need for equity. Below this are sections for 'Social Determinants of Health' and 'Program Development'. A sidebar on the left lists navigation options: Home, My Dashboard, News Feed, Messages, Communities, People Directory, YMCA & Partner..., and Highlights. A 'Pages' menu is also visible, listing News Feed, Posts, Files, Members, and Calendar.

QUESTIONS???





THANK YOU

Jasmine Hardy

jasmine.hardy@ymca.net

312-419-2872